



PRINCE SHRI VENKATESWARA ARTS AND SCIENCE COLLEGE

Gowrivaikam, Chennai-600073

Affiliated to University of Madras, ISO 9001:2015 Certified Institution

9	Rate the composition of the courses in terms of Language papers, Core Papers, Allied Papers, Elective Papers, Soft Skills, Non-major Electives, Value Education, Project etc. (Related to Curriculum)	1	2	0	0	0
10	Rate the availability of text books, reference books, Digital Resources and Reading Material Support facilities in library and research environment (Related to infrastructure facilities & ambience of the institution)	1	1	0	0	1
11	Rate the infrastructure available in the college/ department and its usage efficiently (Related to infrastructure facilities & ambience of the institution)	2	1	0	0	0
12	Rate the classroom, lab, IT and other facilities (Related to infrastructure facilities & ambience of the institution)	2	0	1	0	0
13	Rate the maintenance of classrooms, laboratory, sports facilities, faculty cabin, toilets, rest rooms etc. (Related to infrastructure facilities & ambience of the institution)	1	2	0	0	0
14	Rate the encouragement by the institution for performing research, startup and entrepreneurial activities by the faculty (Related to ambience of the institution)	2	0	0	1	0
15	Rate the opportunity extended and financial aid to participate in Faculty development, Conferences, Workshops and etc., (Related to ambience of the institution)	1	2	0	0	0
16	Rate the working environment such as the relationship with co-workers and superiors, organizational culture etc. (Related to ambience of the institution)	2	1	0	0	0
17	Rate the faculty welfare measures taken by the institution (Related to ambience of the institution)	1	2	0	0	0
18	Rate the recognition/ appraisal system / Incentive/ Appreciation of the individual work by the institution (Related to ambience of the institution)	1	2	0	0	0
19	Rate the encouragement for taking-up consultancy works (Related to ambience of the institution)	1	1	1	0	0
	Rate the uniform work distribution and work load for all the faculty in the department (Related to ambience of the institution)	1	2	0	0	0



B. Kalpana
PRINCIPAL
PRINCE SHRI VENKATESHWARA
ARTS AND SCIENCE COLLEGE
GOWRIVAİKAM, CHENNAI-600 073.



PRINCE SHRI VENKATESWARA ARTS AND SCIENCE COLLEGE

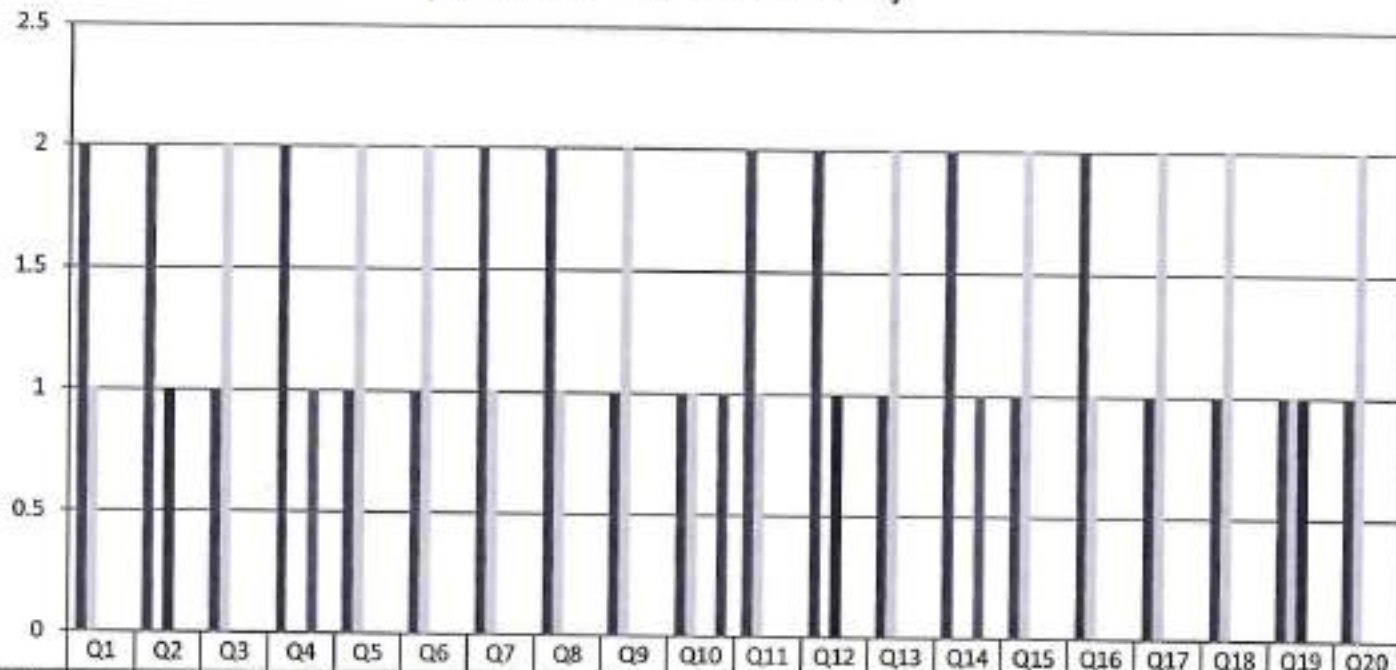
Gowrivaldam, Chennai-600073.

Affiliated to University of Madras, ISO 9001:2015 Certified Institution

**FACULTY FEEDBACK ON CURRICULUM, INFRASTRUCTURE
FACILITIES & AMBIENCE OF THE INSTITUTION - 2019-2020**

B.Sc. BIOCHEMISTRY

(NUMBER OF RESPONDENTS - 3)



B. Kalpana
PRINCIPAL
PRINCE SHRI VENKATESHWARA
ARTS AND SCIENCE COLLEGE
GOWRIVALDAM, CHENNAI-600 073



PRINCE SHRI VENKATESWARA ARTS AND SCIENCE COLLEGE

Gowrivakkam, Chennai-600073.

Affiliated to University of Madras, ISO 9001:2015 Certified Institution

FACULTY FEEDBACK ON CURRICULUM, INFRASTRUCTURE FACILITIES & AMBIENCE OF THE INSTITUTION – ANALYSIS REPORT

Academic Year

2019-20

Department

B.Sc.-Microbiology

Number of Respondents

4

Feedback Rate: Strongly Agree (5), Agree (4), Neutral (3), Disagree (2), Strongly Disagree (1)

S. No	Feedback on Curriculum, infrastructure facilities & ambience of the institution	5	4	3	2	1
1	Rate the sequence of the courses provided in the curriculum (Related to Curriculum)	2	0	2	0	0
2	Rate the syllabus of the courses in relation to the competencies expected out of the course (Related to Curriculum)	3	0	1	0	0
3	Rate the Curriculum facilitation for adoption of new techniques/education tools / strategies in teaching. (Related to Curriculum)	2	1	1	0	0
4	Rate the coverage of Programme / course outcome with the curriculum (Related to Curriculum)	2	0	2	0	0
5	Rate the allocation of the credits and contact hours (L-T-P) to the courses (Related to Curriculum)	1	2	0	1	0
6	Rate the offering of the electives in terms of their relevance to the specialization streams and technological advancements (Related to Curriculum)	3	1	0	0	0
7	Rate the courses in terms of extra learning or self-learning considering the design of the courses. (Related to Curriculum)	3	1	0	0	0
8	Rate the professional development, faculty development and administrative training programs conducted by the institution (Related to Curriculum)	2	1	1	0	0



PRINCE SHRI VENKATESWARA ARTS AND SCIENCE COLLEGE

Gowrivaldam, Chennai-600073

Affiliated to University of Madras, ISO 9001:2015 Certified Institution

9	Rate the composition of the courses in terms of Language papers, Core Papers, Allied Papers, Elective Papers, Soft Skills, Non-major Electives, Value Education, Project etc. (Related to Curriculum)	2	1	1	0	0
10	Rate the availability of text books, reference books, Digital Resources and Reading Material Support facilities in library and research environment (Related to infrastructure facilities & ambience of the institution)	3	0	1	0	0
11	Rate the infrastructure available in the college/ department and its usage efficiently (Related to infrastructure facilities & ambience of the institution)	3	1	0	0	0
12	Rate the classroom, lab, IT and other facilities (Related to infrastructure facilities & ambience of the institution)	3	0	1	0	0
13	Rate the maintenance of classrooms, laboratory, sports facilities, faculty cabin, toilets, rest rooms etc. (Related to infrastructure facilities & ambience of the institution)	2	1	1	0	0
14	Rate the encouragement by the institution for performing research, startup and entrepreneurial activities by the faculty (Related to ambience of the institution)	1	2	1	0	0
15	Rate the opportunity extended and financial aid to participate in Faculty development, Conferences, Workshops and etc., (Related to ambience of the institution)	1	2	1	0	0
16	Rate the working environment such as the relationship with co-workers and superiors, organizational culture etc. (Related to ambience of the institution)	2	1	1	0	0
17	Rate the faculty welfare measures taken by the institution (Related to ambience of the institution)	3	0	1	0	0
18	Rate the recognition/ appraisal system / Incentive/ Appreciation of the individual work by the institution (Related to ambience of the institution)	3	1	0	0	0
19	Rate the encouragement for taking-up consultancy works (Related to ambience of the institution)	2	0	2	0	0
20	Rate the uniform work distribution and work load for all the faculty in the department (Related to ambience of the institution)	3	1	0	0	0



B. Kalpana
PRINCIPAL

PRINCE SHRI VENKATESHWARA
ARTS AND SCIENCE COLLEGE
GOWRIVALDAM, CHENNAI-600 073



PRINCE SHRI VENKATESWARA ARTS AND SCIENCE COLLEGE

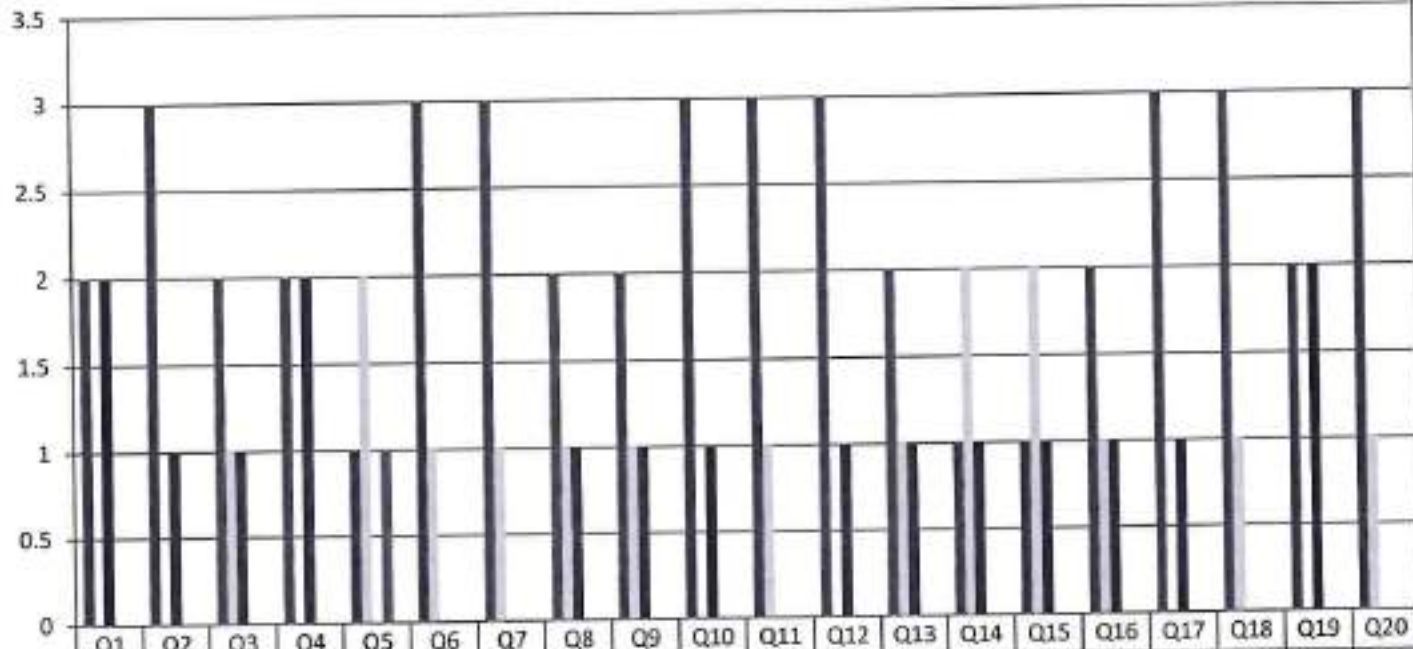
Gowrivakkam, Chennai-600073.

Affiliated to University of Madras, ISO 9001:2015 Certified Institution

FACULTY FEEDBACK ON CURRICULUM, INFRASTRUCTURE FACILITIES & AMBIENCE OF THE INSTITUTION - 2019-2020

B.Sc. MICROBIOLOGY

(NUMBER OF RESPONDENTS - 4)



B. Kalpana
PRINCIPAL
 PRINCE SHRI VENKATESHWARA
 ARTS AND SCIENCE COLLEGE
 CHENNAI-600 073.



PRINCE SHRI VENKATESWARA ARTS AND SCIENCE COLLEGE

Gowrivakkam, Chennai-600073.

Affiliated to University of Madras, ISO 9001:2015 Certified Institution

9	Rate the composition of the courses in terms of Language papers, Core Papers, Allied Papers, Elective Papers, Soft Skills, Non-major Electives, Value Education, Project etc. (Related to Curriculum)	2	0	1	0	0
10	Rate the availability of text books, reference books, Digital Resources and Reading Material Support facilities in library and research environment (Related to infrastructure facilities & ambience of the institution)	2	1	0	0	0
11	Rate the infrastructure available in the college/ department and its usage efficiently (Related to infrastructure facilities & ambience of the institution)	3	0	0	0	0
12	Rate the classroom, lab, IT and other facilities (Related to infrastructure facilities & ambience of the institution)	2	1	0	0	0
13	Rate the maintenance of classrooms, laboratory, sports facilities, faculty cabin, toilets, rest rooms etc. (Related to infrastructure facilities & ambience of the institution)	2	0	1	0	0
14	Rate the encouragement by the institution for performing research, startup and entrepreneurial activities by the faculty (Related to ambience of the institution)	2	1	0	0	0
15	Rate the opportunity extended and financial aid to participate in Faculty development, Conferences, Workshops and etc., (Related to ambience of the institution)	3	0	0	0	0
16	Rate the working environment such as the relationship with co-workers and superiors, organizational culture etc. (Related to ambience of the institution)	2	1	0	0	0
17	Rate the faculty welfare measures taken by the institution (Related to ambience of the institution)	2	1	0	0	0
18	Rate the recognition/ appraisal system / Incentive/ Appreciation of the individual work by the institution (Related to ambience of the institution)	2	0	1	0	0
19	Rate the encouragement for taking-up consultancy works (Related to ambience of the institution)	2	1	0	0	0
20	Rate the uniform work distribution and work load for all the faculty in the department (Related to ambience of the institution)	3	0	0	0	0



B. Kalpana
PRINCIPAL
PRINCE SHRI VENKATESHWARA
ARTS AND SCIENCE COLLEGE
CHENNAI - 600 073



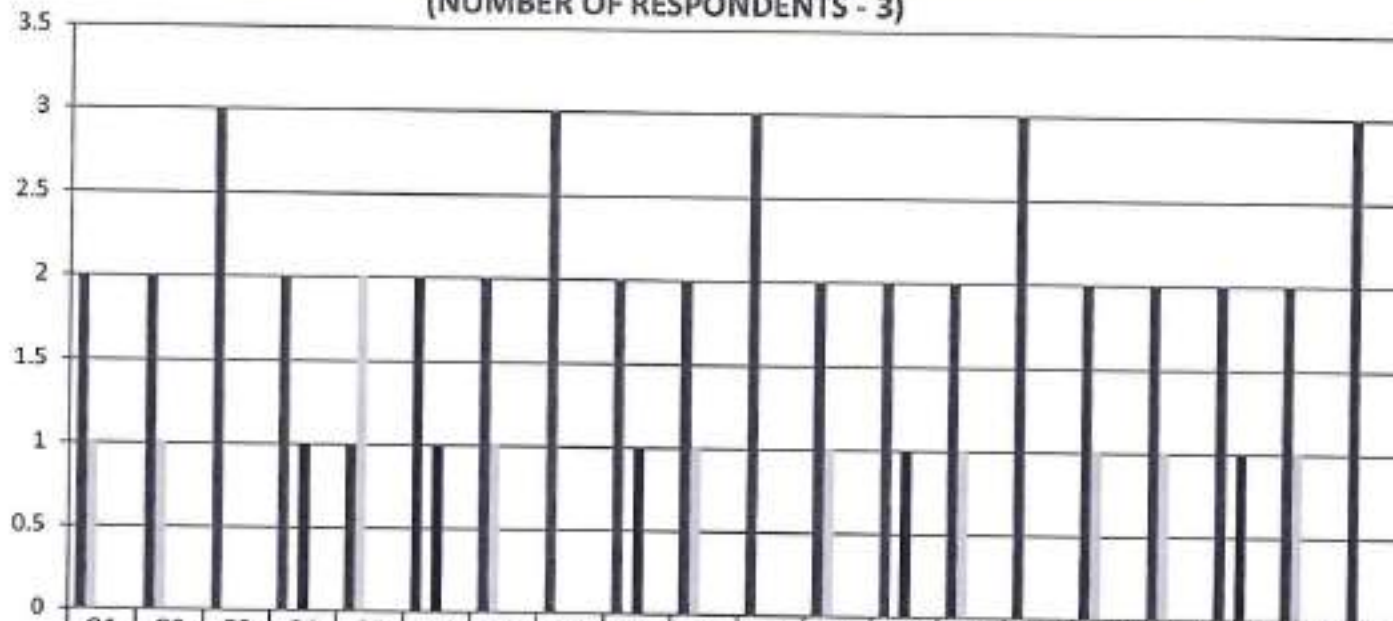
PRINCE SHRI VENKATESWARA ARTS AND SCIENCE COLLEGE

Gowrivaldam, Chennai-600073.

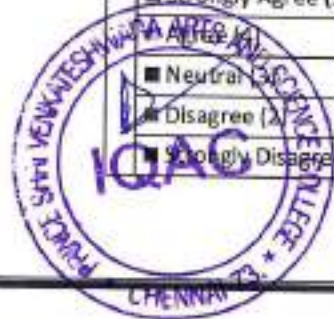
Affiliated to University of Madras, ISO 9001:2015 Certified Institution

**FACULTY FEEDBACK ON CURRICULUM, INFRASTRUCTURE
FACILITIES & AMBIENCE OF THE INSTITUTION - 2019-2020
B.Sc. ELECTRONICS AND COMMUNICATION SCIENCE**

(NUMBER OF RESPONDENTS - 3)



Q	Q1	Q2	Q3	Q4	Q5	Q6	Q7	Q8	Q9	Q10	Q11	Q12	Q13	Q14	Q15	Q16	Q17	Q18	Q19	Q20
Strongly Agree (5)	2	2	3	2	1	2	2	3	2	2	3	2	2	2	3	2	2	2	2	3
Neutral (3)	1	1	0	0	2	0	1	0	0	1	0	1	0	1	0	1	1	0	1	0
Disagree (2)	0	0	0	1	0	1	0	0	1	0	0	0	1	0	0	0	0	1	0	0
Strongly Disagree (1)	0	0	0	0	0	0	0	0	0	0	0	0	0	0	0	0	0	0	0	0



B. Kalpana
PRINCIPAL
PRINCE SHRI VENKATESHWARA
ARTS AND SCIENCE COLLEGE



PRINCE SHRI VENKATESWARA ARTS AND SCIENCE COLLEGE

Gowrivakkam, Chennai-600073.

Affiliated to University of Madras, ISO 9001:2015 Certified Institution

FACULTY FEEDBACK ON CURRICULUM, INFRASTRUCTURE FACILITIES & AMBIENCE OF THE INSTITUTION – ANALYSIS REPORT

Academic Year

2019-20

Department

B.Sc.-Computer Science

Number of Respondents

12

Feedback Rate: Strongly Agree (5), Agree (4), Neutral (3), Disagree (2), Strongly Disagree (1)

S. No	Feedback on Curriculum, infrastructure facilities & ambience of the institution	5	4	3	2	1
1	Rate the sequence of the courses provided in the curriculum (Related to Curriculum)	5	6	1	0	0
2	Rate the syllabus of the courses in relation to the competencies expected out of the course (Related to Curriculum)	6	4	2	0	0
3	Rate the Curriculum facilitation for adoption of new techniques/education tools / strategies in teaching. (Related to Curriculum)	8	2	1	1	0
4	Rate the coverage of Programme / course outcome with the curriculum (Related to Curriculum)	7	1	3	1	0
5	Rate the allocation of the credits and contact hours (L-T-P) to the courses (Related to Curriculum)	6	3	3	0	0
6	Rate the offering of the electives in terms of their relevance to the specialization streams and technological advancements (Related to Curriculum)	11	0	1	0	0
7	Rate the courses in terms of extra learning or self-learning considering the design of the courses. (Related to Curriculum)	7	4	1	0	0
8	Rate the professional development, faculty development and administrative training programs conducted by the institution (Related to Curriculum)	8	3	0	1	0



PRINCE SHRI VENKATESWARA ARTS AND SCIENCE COLLEGE

Gowrivaldam, Chennai-600073.

Affiliated to University of Madras, ISO 9001:2015 Certified Institution

9	Rate the composition of the courses in terms of Language papers, Core Papers, Allied Papers, Elective Papers, Soft Skills, Non-major Electives, Value Education, Project etc. (Related to Curriculum)	9	1	2	0	0
10	Rate the availability of text books, reference books, Digital Resources and Reading Material Support facilities in library and research environment (Related to infrastructure facilities & ambience of the institution)	8	4	0	0	0
11	Rate the infrastructure available in the college/ department and its usage efficiently (Related to infrastructure facilities & ambience of the institution)	7	2	2	1	0
12	Rate the classroom, lab, IT and other facilities (Related to infrastructure facilities & ambience of the institution)	8	3	1	0	0
13	Rate the maintenance of classrooms, laboratory, sports facilities, faculty cabin, toilets, rest rooms etc. (Related to infrastructure facilities & ambience of the institution)	6	4	2	0	0
14	Rate the encouragement by the institution for performing research, startup and entrepreneurial activities by the faculty (Related to ambience of the institution)	7	3	2	0	0
15	Rate the opportunity extended and financial aid to participate in Faculty development, Conferences, Workshops and etc., (Related to ambience of the institution)	9	1	2	0	0
16	Rate the working environment such as the relationship with co-workers and superiors, organizational culture etc. (Related to ambience of the institution)	7	5	0	0	0
17	Rate the faculty welfare measures taken by the institution (Related to ambience of the institution)	6	2	4	0	0
18	Rate the recognition/ appraisal system / Incentive/ Appreciation of the individual work by the institution (Related to ambience of the institution)	7	4	1	0	0
19	Rate the encouragement for taking-up consultancy works (Related to ambience of the institution)	4	6	2	0	0
20	Rate the uniform work distribution and work load for all the faculty in the department (Related to ambience of the institution)	11	0	1	0	0



B. Kalpana
PRINCIPAL
PRINCE SHRI VENKATESWARA
ARTS AND SCIENCE COLLEGE



PRINCE SHRI VENKATESWARA ARTS AND SCIENCE COLLEGE

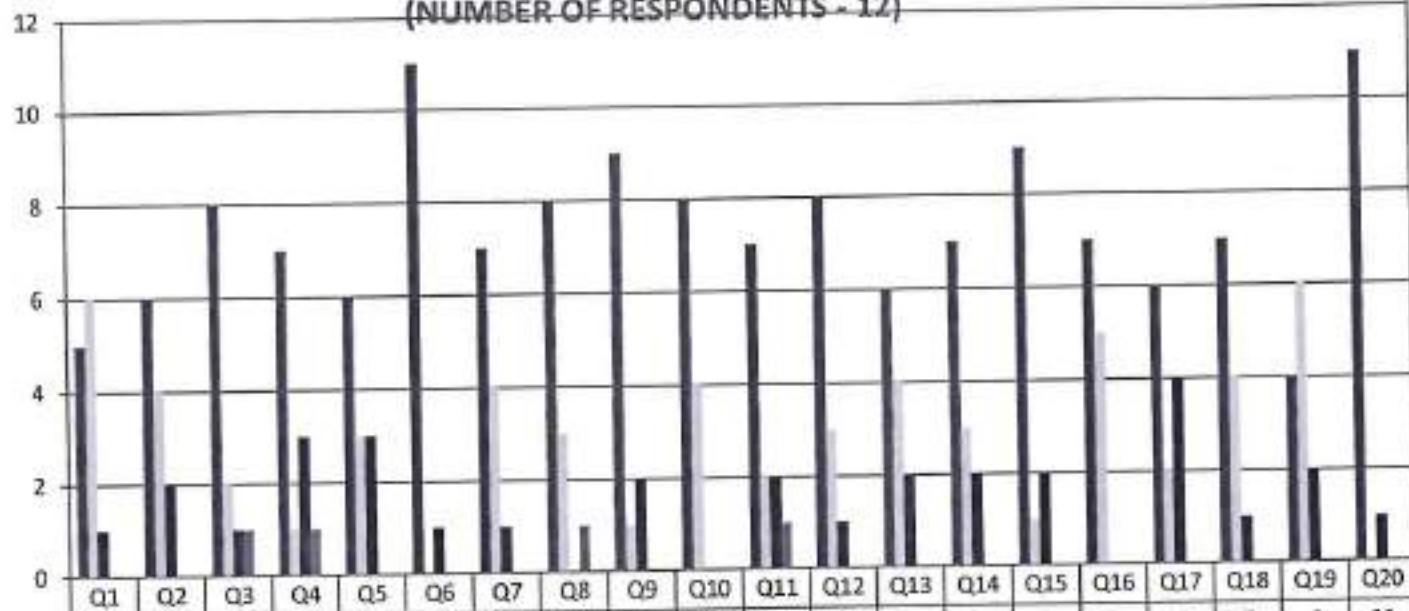
Gowrivakkam, Chennai-600073.

Affiliated to University of Madras, ISO 9001:2015 Certified Institution

FACULTY FEEDBACK ON CURRICULUM, INFRASTRUCTURE FACILITIES & AMBIENCE OF THE INSTITUTION - 2019-2020

B.Sc. COMPUTER SCIENCE

(NUMBER OF RESPONDENTS - 12)



Strongly Agree (5)	5	6	8	7	6	11	7	8	9	8	7	8	6	7	9	7	6	7	4	11
Agree (4)	6	4	2	1	3	0	4	3	1	4	2	3	4	3	1	5	2	4	6	0
Neutral (3)	1	2	1	3	3	1	1	0	2	0	2	1	2	2	2	0	4	1	2	1
Disagree (2)	0	0	1	1	0	0	0	1	0	0	1	0	0	0	0	0	0	0	0	0
Strongly Disagree (1)	0	0	0	0	0	0	0	0	0	0	0	0	0	0	0	0	0	0	0	0



B. Kalpana
PRINCIPAL
 PRINCE SHRI VENKATESHWARA
 ARTS AND SCIENCE COLLEGE
 GOWRIVAKKAM, CHENNAI-600 073



PRINCE SHRI VENKATESWARA ARTS AND SCIENCE COLLEGE

Gowrivakkam, Chennai-600073.

Affiliated to University of Madras, ISO 9001:2015 Certified Institution

FACULTY FEEDBACK ON CURRICULUM, INFRASTRUCTURE FACILITIES & AMBIENCE OF THE INSTITUTION – ANALYSIS REPORT

Academic Year 2019-20
Department B. Com-General
Number of Respondents 13

Feedback Rate: Strongly Agree (5), Agree (4), Neutral (3), Disagree (2), Strongly Disagree (1)

S. No	Feedback on Curriculum, infrastructure facilities & ambience of the institution	5	4	3	2	1
1	Rate the sequence of the courses provided in the curriculum (Related to Curriculum)	6	7	0	0	0
2	Rate the syllabus of the courses in relation to the competencies expected out of the course (Related to Curriculum)	5	1	6	1	0
3	Rate the Curriculum facilitation for adoption of new techniques/education tools / strategies in teaching. (Related to Curriculum)	7	4	2	0	0
4	Rate the coverage of Programme / course outcome with the curriculum (Related to Curriculum)	8	3	2	0	0
5	Rate the allocation of the credits and contact hours (L-T-P) to the courses (Related to Curriculum)	9	1	2	1	0
6	Rate the offering of the electives in terms of their relevance to the specialization streams and technological advancements (Related to Curriculum)	8	1	3	1	0
7	Rate the courses in terms of extra learning or self-learning considering the design of the courses. (Related to Curriculum)	5	5	3	0	0
8	Rate the professional development, faculty development and administrative training programs conducted by the institution (Related to Curriculum)	7	5	0	0	1



PRINCE SHRI VENKATESWARA ARTS AND SCIENCE COLLEGE

Gowrivakkam, Chennai-600073.

Affiliated to University of Madras, ISO 9001:2015 Certified Institution

9	Rate the composition of the courses in terms of Language papers, Core Papers, Allied Papers, Elective Papers, Soft Skills, Non-major Electives, Value Education, Project etc. (Related to Curriculum)	8	4	1	0	0
10	Rate the availability of text books, reference books, Digital Resources and Reading Material Support facilities in library and research environment (Related to infrastructure facilities & ambience of the institution)	5	8	0	0	0
11	Rate the infrastructure available in the college/ department and its usage efficiently (Related to infrastructure facilities & ambience of the institution)	7	6	0	0	0
12	Rate the classroom, lab, IT and other facilities (Related to infrastructure facilities & ambience of the institution)	6	4	2	1	0
13	Rate the maintenance of classrooms, laboratory, sports facilities, faculty cabin, toilets, rest rooms etc. (Related to infrastructure facilities & ambience of the institution)	8	3	1	0	1
14	Rate the encouragement by the institution for performing research, startup and entrepreneurial activities by the faculty (Related to ambience of the institution)	6	7	0	0	0
15	Rate the opportunity extended and financial aid to participate in Faculty development, Conferences, Workshops and etc., (Related to ambience of the institution)	7	6	0	0	0
16	Rate the working environment such as the relationship with co-workers and superiors, organizational culture etc. (Related to ambience of the institution)	5	5	2	1	0
17	Rate the faculty welfare measures taken by the institution (Related to ambience of the institution)	6	6	1	0	0
18	Rate the recognition/ appraisal system / Incentive/ Appreciation of the individual work by the institution (Related to ambience of the institution)	8	3	2	0	0
19	Rate the encouragement for taking-up consultancy works (Related to ambience of the institution)	4	6	3	0	0
20	Rate the uniform work distribution and work load for all the faculty in the department (Related to ambience of the institution)	2	11	0	0	0



B. Kalpana
PRINCIPAL
PRINCE SHRI VENKATESHWARA
ARTS AND SCIENCE COLLEGE
CHENNAI-600 073.



PRINCE SHRI VENKATESWARA ARTS AND SCIENCE COLLEGE

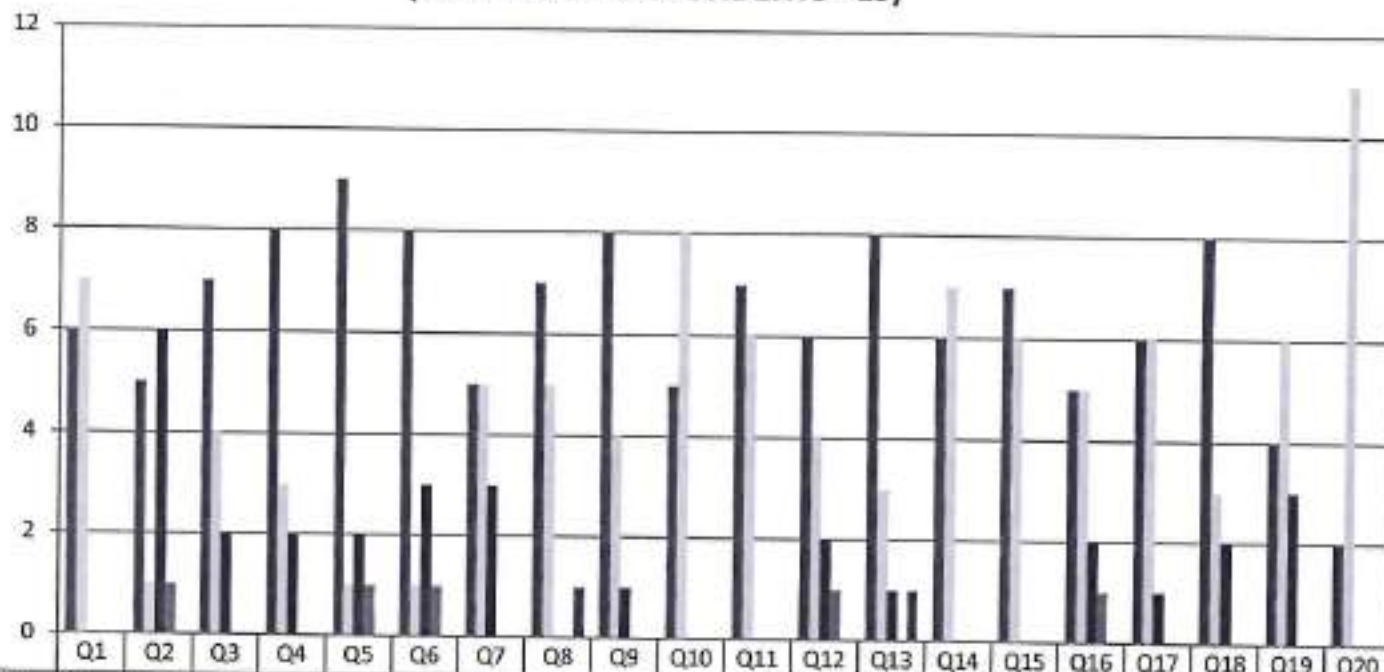
Gowrivaldam, Chennai-600073.

Affiliated to University of Madras, ISO 9001:2015 Certified Institution

**FACULTY FEEDBACK ON CURRICULUM, INFRASTRUCTURE
FACILITIES & AMBIENCE OF THE INSTITUTION - 2019-2020**

B.COM (GENERAL)

(NUMBER OF RESPONDENTS - 13)



Q	Strongly Agree (5)	Agree (4)	Neutral (3)	Disagree (2)	Strongly Disagree (1)
Q1	6	7	0	0	0
Q2	5	1	6	1	0
Q3	7	4	2	0	0
Q4	8	3	2	0	0
Q5	9	1	2	1	0
Q6	8	1	3	1	0
Q7	5	5	3	0	0
Q8	7	5	0	0	1
Q9	8	4	1	0	0
Q10	5	8	0	0	0
Q11	7	6	0	0	0
Q12	6	4	2	1	0
Q13	8	3	1	0	1
Q14	6	7	0	0	0
Q15	7	6	0	1	0
Q16	5	5	2	1	0
Q17	6	6	1	0	0
Q18	8	3	2	0	0
Q19	4	6	3	0	0
Q20	2	11	0	0	0



B. Kalpana
PRINCIPAL
PRINCE SHRI VENKATESHWARA
ARTS AND SCIENCE COLLEGE



PRINCE SHRI VENKATESWARA ARTS AND SCIENCE COLLEGE

Gowrivaldam, Chennai-600073.

Affiliated to University of Madras, ISO 9001:2015 Certified Institution

9	Rate the composition of the courses in terms of Language papers, Core Papers, Allied Papers, Elective Papers, Soft Skills, Non-major Electives, Value Education, Project etc. (Related to Curriculum)	6	5	0	0	0
10	Rate the availability of text books, reference books, Digital Resources and Reading Material Support facilities in library and research environment (Related to infrastructure facilities & ambience of the institution)	7	1	3	0	0
11	Rate the infrastructure available in the college/ department and its usage efficiently (Related to infrastructure facilities & ambience of the institution)	8	2	1	0	0
12	Rate the classroom, lab, IT and other facilities (Related to infrastructure facilities & ambience of the institution)	9	1	1	0	0
13	Rate the maintenance of classrooms, laboratory, sports facilities, faculty cabin, toilets, rest rooms etc. (Related to infrastructure facilities & ambience of the institution)	6	4	0	1	0
14	Rate the encouragement by the institution for performing research, startup and entrepreneurial activities by the faculty (Related to ambience of the institution)	5	4	2	0	0
15	Rate the opportunity extended and financial aid to participate in Faculty development, Conferences, Workshops and etc., (Related to ambience of the institution)	6	5	0	0	0
16	Rate the working environment such as the relationship with co-workers and superiors, organizational culture etc. (Related to ambience of the institution)	5	3	2	1	0
17	Rate the faculty welfare measures taken by the institution (Related to ambience of the institution)	5	4	2	0	0
18	Rate the recognition/ appraisal system / Incentive/ Appreciation of the individual work by the institution (Related to ambience of the institution)	7	2	2	0	0
19	Rate the encouragement for taking-up consultancy works (Related to ambience of the institution)	8	1	2	0	0
20	Rate the uniform work distribution and work load for all the faculty in the department (Related to ambience of the institution)	9	1	1	0	0



B. Kalpana
PRINCIPAL

PRINCE SHRI VENKATESWARA
ARTS AND SCIENCE COLLEGE



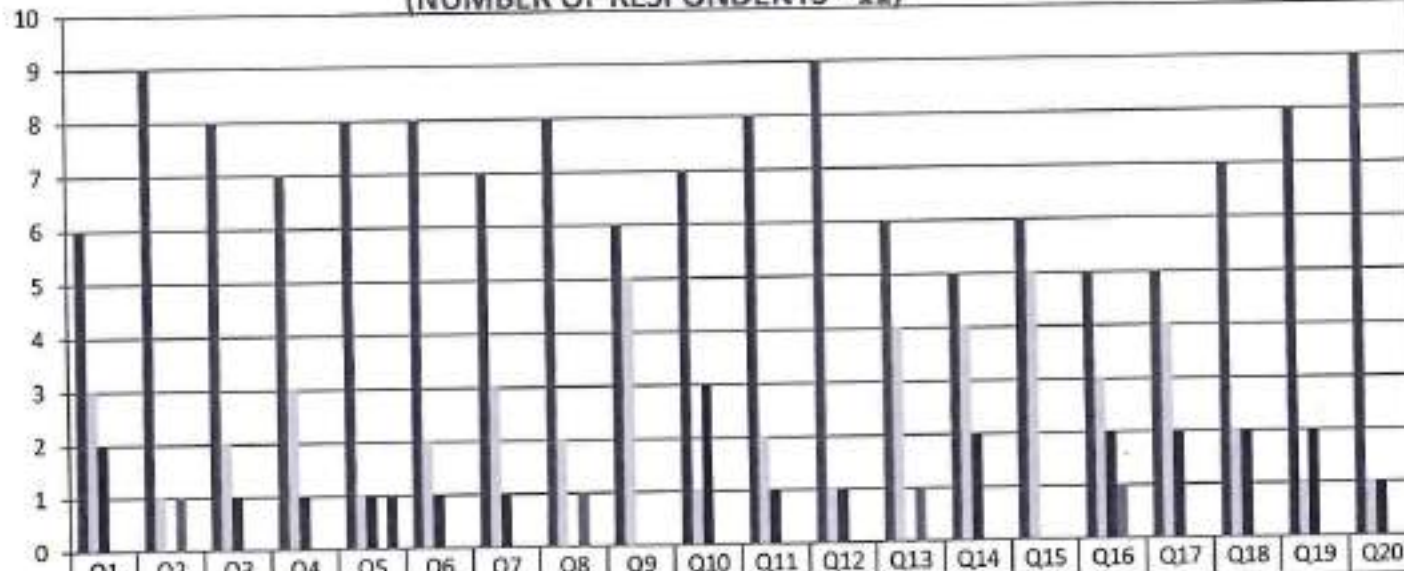
PRINCE SHRI VENKATESWARA ARTS AND SCIENCE COLLEGE

Gowrivakkam, Chennai-600073.

Affiliated to University of Madras, ISO 9001:2015 Certified Institution

FACULTY FEEDBACK ON CURRICULUM, INFRASTRUCTURE FACILITIES & AMBIENCE OF THE INSTITUTION - 2019-2020
BCA

(NUMBER OF RESPONDENTS - 11)



	Q1	Q2	Q3	Q4	Q5	Q6	Q7	Q8	Q9	Q10	Q11	Q12	Q13	Q14	Q15	Q16	Q17	Q18	Q19	Q20
Strongly Agree (5)	6	9	8	7	8	8	7	8	6	7	8	9	6	5	6	5	5	7	8	9
Agree (4)	3	1	2	3	1	2	3	2	5	1	2	1	4	4	5	3	4	2	1	1
Neutral (3)	2	0	1	1	1	1	1	0	0	3	1	1	0	2	0	2	2	2	2	1
Disagree (2)	0	1	0	0	0	0	0	1	0	0	0	0	1	0	0	1	0	0	0	0
Strongly Disagree (1)	0	0	0	0	1	0	0	0	0	0	0	0	0	0	0	0	0	0	0	0



B. Kalpana
PRINCIPAL
PRINCE SHRI VENKATESHWARA
ARTS AND SCIENCE COLLEGE
GOWRIVAKKAM, CHENNAI-600 073.



PRINCE SHRI VENKATESWARA ARTS AND SCIENCE COLLEGE

Gowrivakkam, Chennai-600073.

Affiliated to University of Madras, ISO 9001:2015 Certified Institution

9	Rate the composition of the courses in terms of Language papers, Core Papers, Allied Papers, Elective Papers, Soft Skills, Non-major Electives, Value Education, Project etc. (Related to Curriculum)	3	1	1	1	0
10	Rate the availability of text books, reference books, Digital Resources and Reading Material Support facilities in library and research environment (Related to infrastructure facilities & ambience of the institution)	4	2	0	0	0
11	Rate the infrastructure available in the college/ department and its usage efficiently (Related to infrastructure facilities & ambience of the institution)	4	1	1	0	0
12	Rate the classroom, lab, IT and other facilities (Related to infrastructure facilities & ambience of the institution)	3	3	0	0	0
13	Rate the maintenance of classrooms, laboratory, sports facilities, faculty cabin, toilets, rest rooms etc. (Related to infrastructure facilities & ambience of the institution)	4	1	0	1	0
14	Rate the encouragement by the institution for performing research, startup and entrepreneurial activities by the faculty (Related to ambience of the institution)	4	1	1	0	0
15	Rate the opportunity extended and financial aid to participate in Faculty development, Conferences, Workshops and etc., (Related to ambience of the institution)	2	3	1	0	0
16	Rate the working environment such as the relationship with co-workers and superiors, organizational culture etc. (Related to ambience of the institution)	3	3	0	0	0
17	Rate the faculty welfare measures taken by the institution (Related to ambience of the institution)	3	3	0	0	0
18	Rate the recognition/ appraisal system / Incentive/ Appreciation of the individual work by the institution (Related to ambience of the institution)	4	1	1	0	0
19	Rate the encouragement for taking-up consultancy works (Related to ambience of the institution)	4	1	1	0	0
20	Rate the uniform work distribution and work load for all the faculty in the department (Related to ambience of the institution)	4	2	0	0	0



B. Kalpane
PRINCIPAL
PRINCE SHRI VENKATESHWARA
ARTS AND SCIENCE COLLEGE
CHENNAI-600 073.



PRINCE SHRI VENKATESWARA ARTS AND SCIENCE COLLEGE

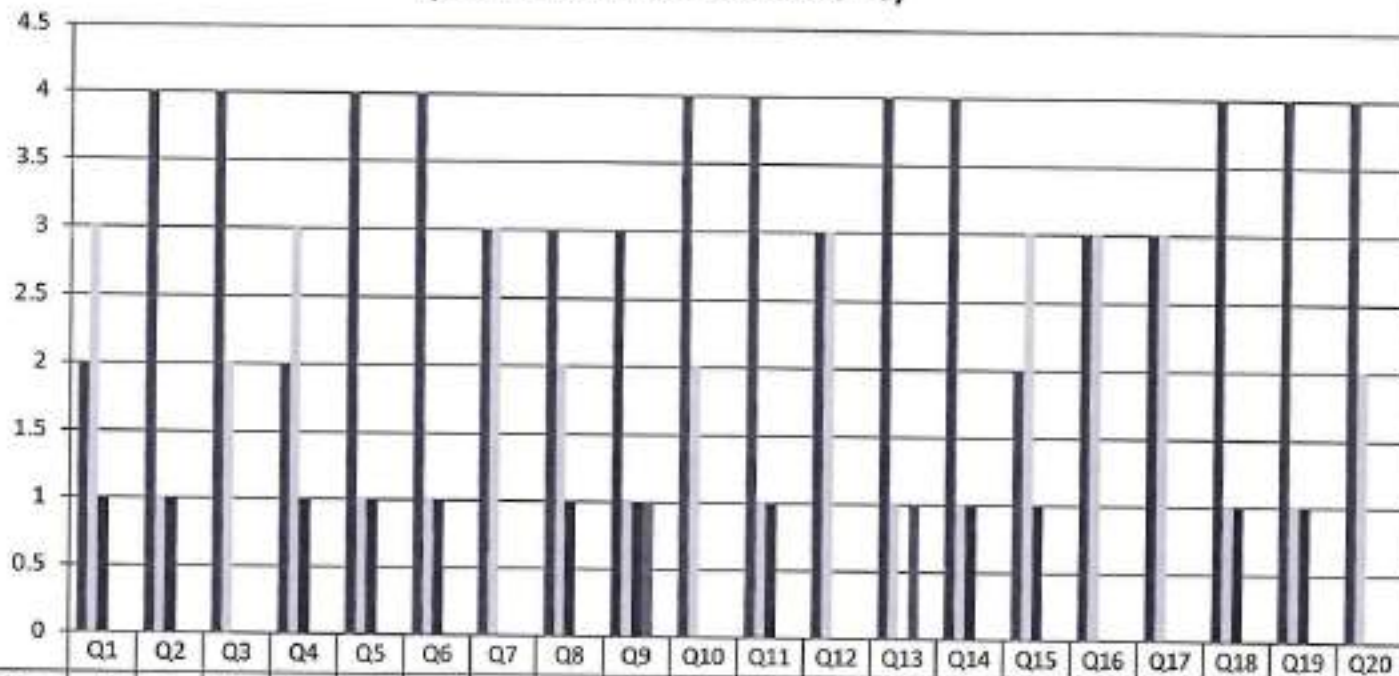
Gowrivakkam, Chennai-600073.

Affiliated to University of Madras, ISO 9001:2015 Certified Institution

**FACULTY FEEDBACK ON CURRICULUM, INFRASTRUCTURE
FACILITIES & AMBIENCE OF THE INSTITUTION - 2019-2020**

B.Sc. BIOTECHNOLOGY

(NUMBER OF RESPONDENTS - 6)



B. Kalpana
PRINCIPAL

**PRINCE SHRI VENKATESHWARA
ARTS AND SCIENCE COLLEGE**



PRINCE SHRI VENKATESWARA ARTS AND SCIENCE COLLEGE

Gowrivaldam, Chennai-600073.

Affiliated to University of Madras, ISO 9001:2015 Certified Institution

9	Rate the composition of the courses in terms of Language papers, Core Papers, Allied Papers, Elective Papers, Soft Skills, Non-major Electives, Value Education, Project etc. (Related to Curriculum)	4	4	1	0	0
10	Rate the availability of text books, reference books, Digital Resources and Reading Material Support facilities in library and research environment (Related to infrastructure facilities & ambience of the institution)	4	4	1	0	0
11	Rate the infrastructure available in the college/ department and its usage efficiently (Related to infrastructure facilities & ambience of the institution)	6	3	0	0	0
12	Rate the classroom, lab, IT and other facilities (Related to infrastructure facilities & ambience of the institution)	4	4	1	0	0
13	Rate the maintenance of classrooms, laboratory, sports facilities, faculty cabin, toilets, rest rooms etc. (Related to infrastructure facilities & ambience of the institution)	5	3	1	0	0
14	Rate the encouragement by the institution for performing research, startup and entrepreneurial activities by the faculty (Related to ambience of the institution)	7	1	1	0	0
15	Rate the opportunity extended and financial aid to participate in Faculty development, Conferences, Workshops and etc., (Related to ambience of the institution)	5	2	2	0	0
16	Rate the working environment such as the relationship with co-workers and superiors, organizational culture etc. (Related to ambience of the institution)	6	2	1	0	0
17	Rate the faculty welfare measures taken by the institution (Related to ambience of the institution)	4	4	1	0	0
18	Rate the recognition/ appraisal system / Incentive/ Appreciation of the individual work by the institution (Related to ambience of the institution)	6	2	1	0	0
19	Rate the encouragement for taking-up consultancy works (Related to ambience of the institution)	6	3	0	0	0
20	Rate the uniform work distribution and work load for all the faculty in the department (Related to ambience of the institution)	6	3	0	0	0



B. Kalpana
PRINCIPAL

PRINCE SHRI VENKATESWARA
ARTS AND SCIENCE COLLEGE

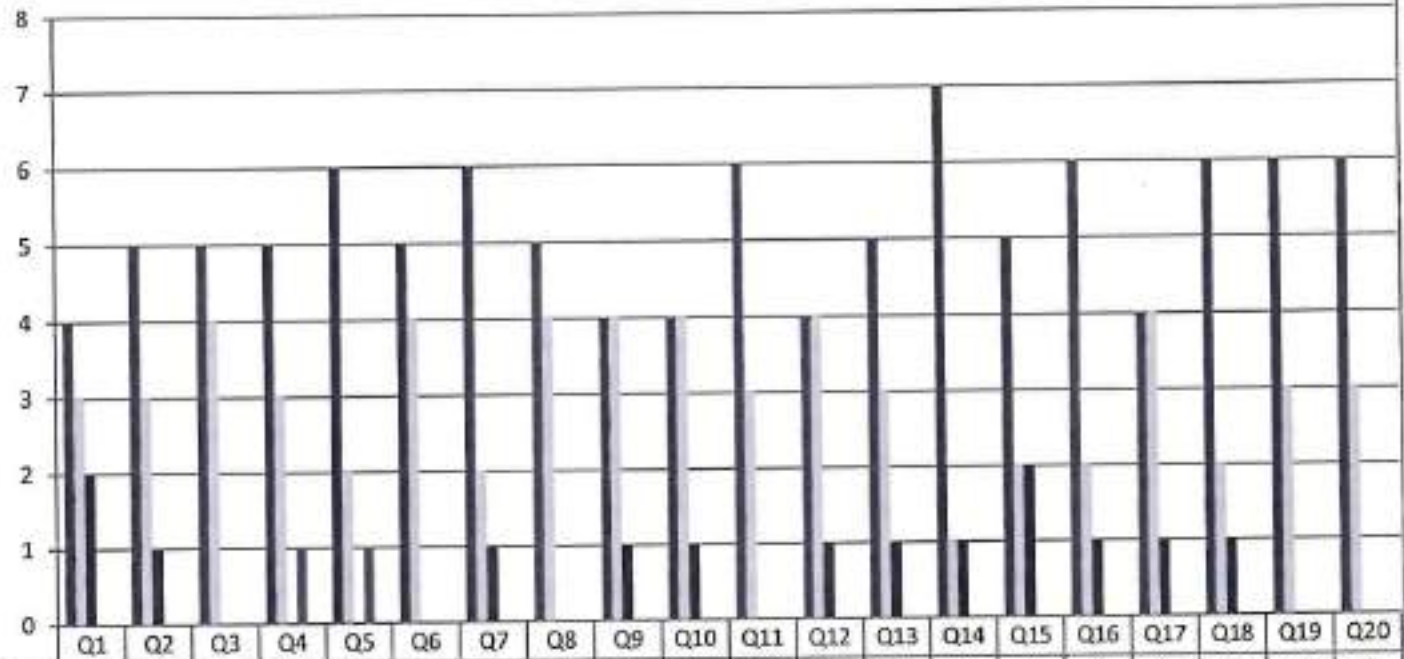


PRINCE SHRI VENKATESWARA ARTS AND SCIENCE COLLEGE

Gowrivakkam, Chennai-600073.

Affiliated to University of Madras, ISO 9001:2015 Certified Institution

FACULTY FEEDBACK ON CURRICULUM, INFRASTRUCTURE FACILITIES & AMBIENCE OF THE INSTITUTION - 2019-2020
B.COM (ACCOUNTING AND FINANCE)
 (NUMBER OF RESPONDENTS - 9)



Strongly Agree (5)	4	5	5	5	6	5	6	5	4	4	6	4	5	7	5	6	4	6	6	6
Agree (4)	3	3	4	3	2	4	2	4	4	4	3	4	3	1	2	2	4	2	3	3
Neutral (3)	2	1	0	0	0	0	1	0	1	1	0	1	1	1	2	1	1	1	0	0
Disagree (2)	0	0	0	1	1	0	0	0	0	0	0	0	0	0	0	0	0	0	0	0
Strongly Disagree (1)	0	0	0	0	0	0	0	0	0	0	0	0	0	0	0	0	0	0	0	0



B. K. K. Prasad
PRINCIPAL
 PRINCE SHRI VENKATESHWARA
 ARTS AND SCIENCE COLLEGE
 CHENNAI-600 073.



PRINCE SHRI VENKATESWARA ARTS AND SCIENCE COLLEGE

Gowrivakkam, Chennai-600073.

Affiliated to University of Madras, ISO 9001:2015 Certified Institution

9	Rate the composition of the courses in terms of Language papers, Core Papers, Allied Papers, Elective Papers, Soft Skills, Non-major Electives, Value Education, Project etc. (Related to Curriculum)	4	1	0	0	0
10	Rate the availability of text books, reference books, Digital Resources and Reading Material Support facilities in library and research environment (Related to infrastructure facilities & ambience of the institution)	2	2	1	0	0
11	Rate the infrastructure available in the college/ department and its usage efficiently (Related to infrastructure facilities & ambience of the institution)	3	1	1	0	0
12	Rate the classroom, lab, IT and other facilities (Related to infrastructure facilities & ambience of the institution)	4	1	0	0	0
13	Rate the maintenance of classrooms, laboratory, sports facilities, faculty cabin, toilets, rest rooms etc. (Related to infrastructure facilities & ambience of the institution)	3	2	0	0	0
14	Rate the encouragement by the institution for performing research, startup and entrepreneurial activities by the faculty (Related to ambience of the institution)	2	2	0	1	0
15	Rate the opportunity extended and financial aid to participate in Faculty development, Conferences, Workshops and etc., (Related to ambience of the institution)	3	2	0	0	0
16	Rate the working environment such as the relationship with co-workers and superiors, organizational culture etc. (Related to ambience of the institution)	3	1	0	1	0
17	Rate the faculty welfare measures taken by the institution (Related to ambience of the institution)	4	0	1	0	0
18	Rate the recognition/ appraisal system / Incentive/ Appreciation of the individual work by the institution (Related to ambience of the institution)	3	1	1	0	0
19	Rate the encouragement for taking-up consultancy works (Related to ambience of the institution)	4	1	0	0	0
20	Rate the uniform work distribution and work load for all the faculty in the department (Related to ambience of the institution)	3	2	0	0	0



B. Kalpana
PRINCIPAL
PRINCE SHRI VENKATESHWARA
ARTS AND SCIENCE COLLEGE
CHENNAI-600 073.



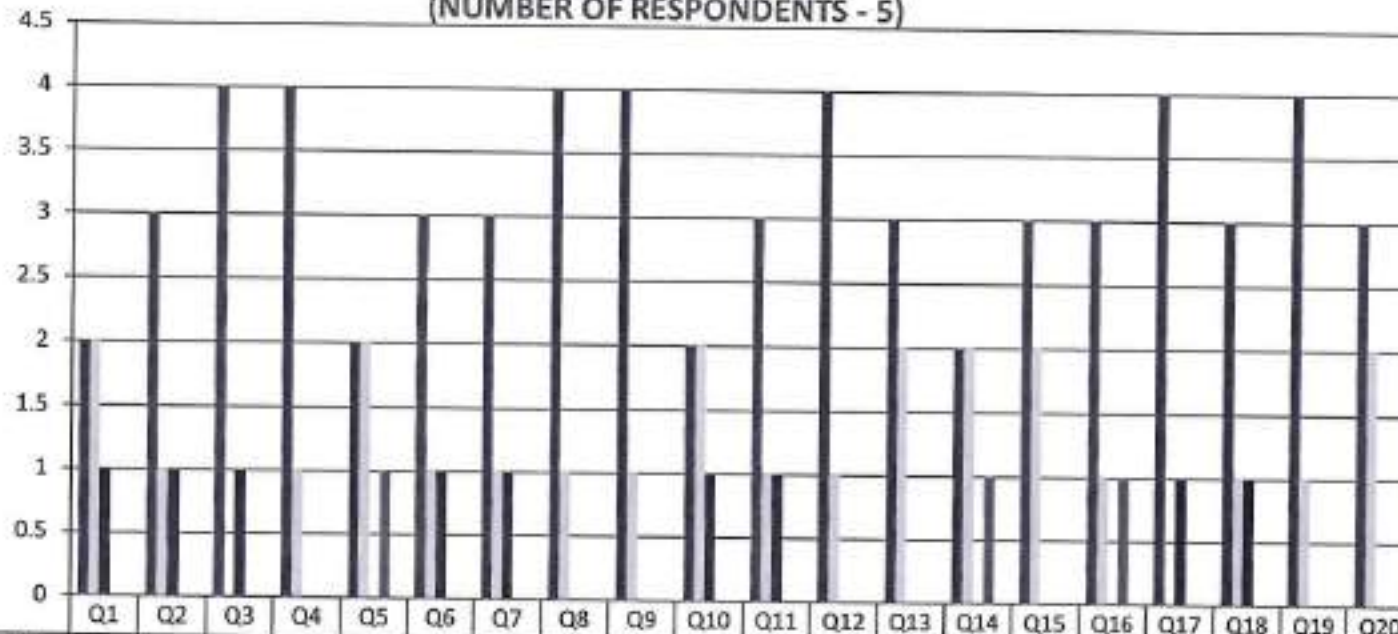
PRINCE SHRI VENKATESWARA ARTS AND SCIENCE COLLEGE

Gowrivakkam, Chennai-600073.

Affiliated to University of Madras, ISO 9001:2015 Certified Institution

**FACULTY FEEDBACK ON CURRICULUM, INFRASTRUCTURE
FACILITIES & AMBIENCE OF THE INSTITUTION - 2019-2020
B.A. ENGLISH**

(NUMBER OF RESPONDENTS - 5)



	Q1	Q2	Q3	Q4	Q5	Q6	Q7	Q8	Q9	Q10	Q11	Q12	Q13	Q14	Q15	Q16	Q17	Q18	Q19	Q20
Strongly Agree (5)	2	3	4	4	2	3	3	4	4	2	3	4	3	2	3	3	4	3	4	3
Agree (4)	2	1	0	1	2	1	1	1	1	2	1	1	2	2	2	1	0	1	1	2
Neutral (3)	1	1	1	0	0	1	1	0	0	1	1	0	0	0	0	0	1	1	0	0
Disagree	0	0	0	0	1	0	0	0	0	0	0	0	0	1	0	1	0	0	0	0
Strongly Disagree (1)	0	0	0	0	0	0	0	0	0	0	0	0	0	0	0	0	0	0	0	0



B. Kalpana
PRINCIPAL

PRINCE SHRI VENKATESWARA
ARTS AND SCIENCE COLLEGE



PRINCE SHRI VENKATESWARA ARTS AND SCIENCE COLLEGE

Gowrivakkam, Chennai-600073.

Affiliated to University of Madras, ISO 9001:2015 Certified Institution

FACULTY FEEDBACK ON CURRICULUM, INFRASTRUCTURE FACILITIES & AMBIENCE OF THE INSTITUTION – ANALYSIS REPORT

Academic Year 2019-20

Department BBA

Number of Respondents 3

Feedback Rate: Strongly Agree (5), Agree (4), Neutral (3), Disagree (2), Strongly Disagree (1)

S. No	Feedback on Curriculum, infrastructure facilities & ambience of the institution	5	4	3	2	1
1	Rate the sequence of the courses provided in the curriculum (Related to Curriculum)	2	1	0	0	0
2	Rate the syllabus of the courses in relation to the competencies expected out of the course (Related to Curriculum)	3	0	0	0	0
3	Rate the Curriculum facilitation for adoption of new techniques/education tools / strategies in teaching. (Related to Curriculum)	2	0	1	0	0
4	Rate the coverage of Programme / course outcome with the curriculum (Related to Curriculum)	2	1	0	0	0
5	Rate the allocation of the credits and contact hours (L-T-P) to the courses (Related to Curriculum)	3	0	0	0	0
6	Rate the offering of the electives in terms of their relevance to the specialization streams and technological advancements (Related to Curriculum)	3	0	0	0	0
7	Rate the courses in terms of extra learning or self-learning considering the design of the courses. (Related to Curriculum)	3	0	0	0	0
8	Rate the professional development, faculty development and administrative training programs conducted by the institution (Related to Curriculum)	2	1	0	0	0



PRINCE SHRI VENKATESWARA ARTS AND SCIENCE COLLEGE

Gowrivakkam, Chennai-600073.

Affiliated to University of Madras, ISO 9001:2015 Certified Institution

9	Rate the composition of the courses in terms of Language papers, Core Papers, Allied Papers, Elective Papers, Soft Skills, Non-major Electives, Value Education, Project etc. (Related to Curriculum)	2	1	0	0	0
10	Rate the availability of text books, reference books, Digital Resources and Reading Material Support facilities in library and research environment (Related to infrastructure facilities & ambience of the institution)	3	0	0	0	0
11	Rate the infrastructure available in the college/ department and its usage efficiently (Related to infrastructure facilities & ambience of the institution)	2	0	1	0	0
12	Rate the classroom, lab, IT and other facilities (Related to infrastructure facilities & ambience of the institution)	2	1	0	0	0
13	Rate the maintenance of classrooms, laboratory, sports facilities, faculty cabin, toilets, rest rooms etc. (Related to infrastructure facilities & ambience of the institution)	3	0	0	0	0
14	Rate the encouragement by the institution for performing research, startup and entrepreneurial activities by the faculty (Related to ambience of the institution)	1	2	0	0	0
15	Rate the opportunity extended and financial aid to participate in Faculty development, Conferences, Workshops and etc., (Related to ambience of the institution)	1	1	1	0	0
16	Rate the working environment such as the relationship with co-workers and superiors, organizational culture etc. (Related to ambience of the institution)	1	2	0	0	0
17	Rate the faculty welfare measures taken by the institution (Related to ambience of the institution)	1	1	1	0	0
18	Rate the recognition/ appraisal system / Incentive/ Appreciation of the individual work by the institution (Related to ambience of the institution)	3	0	0	0	0
19	Rate the encouragement for taking-up consultancy works (Related to ambience of the institution)	2	1	0	0	0
20	Rate the uniform work distribution and work load for all the faculty in the department (Related to ambience of the institution)	3	0	0	0	0



B. Kalpana
PRINCIPAL

PRINCE SHRI VENKATESHWARA
ARTS AND SCIENCE COLLEGE
GOWRIVAKKAM CHENNAI-600 073.



PRINCE SHRI VENKATESWARA ARTS AND SCIENCE COLLEGE

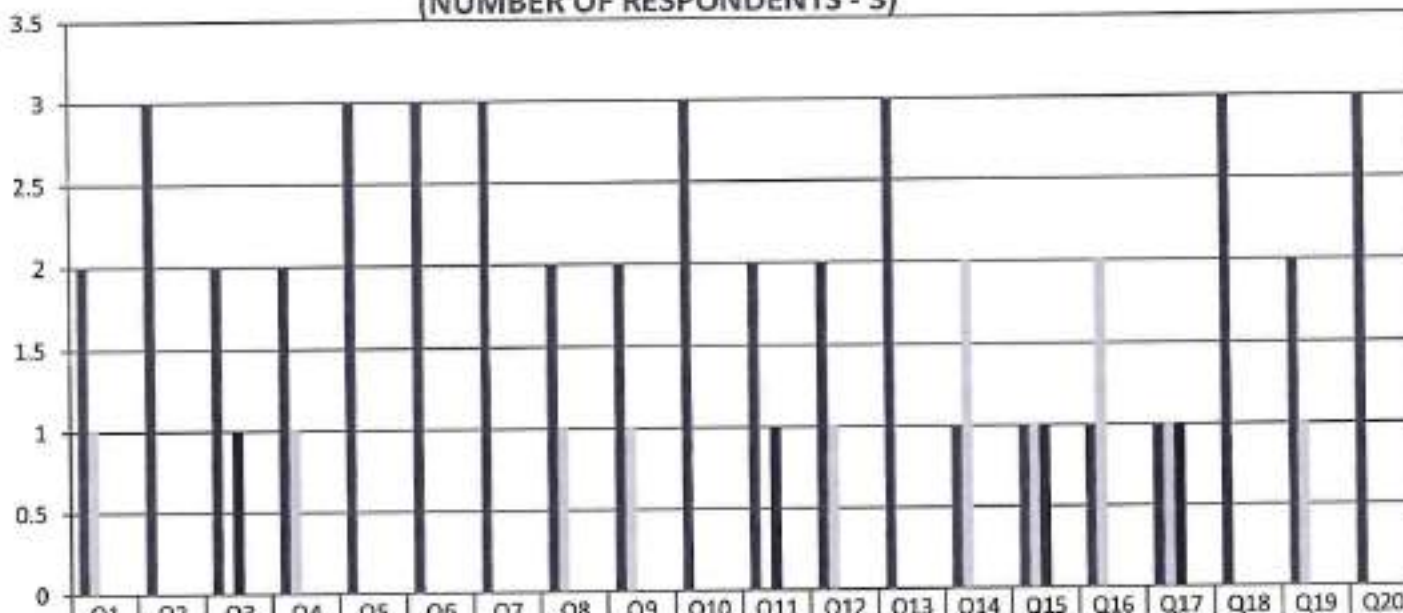
Gowrivakkam, Chennai-600073.

Affiliated to University of Madras, ISO 9001:2015 Certified Institution

FACULTY FEEDBACK ON CURRICULUM, INFRASTRUCTURE FACILITIES & AMBIENCE OF THE INSTITUTION - 2019-2020

BBA

(NUMBER OF RESPONDENTS - 3)



Strongly Agree (5)	2	3	2	2	3	3	3	2	2	3	2	2	3	1	1	1	1	3	2	3
Agree (4)	1	0	0	1	0	0	0	1	1	0	0	1	0	2	1	2	1	0	1	0
Neutral (3)	0	0	1	0	0	0	0	0	0	0	1	0	0	0	1	0	1	0	0	0
Disagree (2)	0	0	0	0	0	0	0	0	0	0	0	0	0	0	0	0	0	0	0	0
Strongly Disagree (1)	0	0	0	0	0	0	0	0	0	0	0	0	0	0	0	0	0	0	0	0



B. Kalpana
PRINCIPAL
 PRINCE SHRI VENKATESHWARA
 ARTS AND SCIENCE COLLEGE
 GOWRIVAKKAM, CHENNAI-600 073.



PRINCE SHRI VENKATESWARA ARTS AND SCIENCE COLLEGE

Gowrivaikam, Chennai-600073.

Affiliated to University of Madras, ISO 9001:2015 Certified Institution

9	Rate the composition of the courses in terms of Language papers, Core Papers, Allied Papers, Elective Papers, Soft Skills, Non-major Electives, Value Education, Project etc. (Related to Curriculum)	0	2	0	0	0
10	Rate the availability of text books, reference books, Digital Resources and Reading Material Support facilities in library and research environment (Related to infrastructure facilities & ambience of the institution)	1	0	1	0	0
11	Rate the infrastructure available in the college/ department and its usage efficiently (Related to infrastructure facilities & ambience of the institution)	2	0	0	0	0
12	Rate the classroom, lab, IT and other facilities (Related to infrastructure facilities & ambience of the institution)	2	0	0	0	0
13	Rate the maintenance of classrooms, laboratory, sports facilities, faculty cabin, toilets, rest rooms etc. (Related to infrastructure facilities & ambience of the institution)	0	2	0	0	0
14	Rate the encouragement by the institution for performing research, startup and entrepreneurial activities by the faculty (Related to ambience of the institution)	1	1	0	0	0
15	Rate the opportunity extended and financial aid to participate in Faculty development, Conferences, Workshops and etc., (Related to ambience of the institution)	1	0	1	0	0
16	Rate the working environment such as the relationship with co-workers and superiors, organizational culture etc. (Related to ambience of the institution)	1	1	0	0	0
17	Rate the faculty welfare measures taken by the institution (Related to ambience of the institution)	1	0	1	0	0
18	Rate the recognition/ appraisal system / Incentive/ Appreciation of the individual work by the institution (Related to ambience of the institution)	2	0	0	0	0
19	Rate the encouragement for taking-up consultancy works (Related to ambience of the institution)	2	0	0	0	0
20	Rate the uniform work distribution and work load for all the faculty in the department (Related to ambience of the institution)	2	0	0	0	0



B. Kalpana
PRINCIPAL
PRINCE SHRI VENKATESHWARA
ARTS AND SCIENCE COLLEGE
CHENNAI-600 073.



PRINCE SHRI VENKATESWARA ARTS AND SCIENCE COLLEGE

Gowrivakkam, Chennai-600073.

Affiliated to University of Madras, ISO 9001:2015 Certified Institution

**FACULTY FEEDBACK ON CURRICULUM, INFRASTRUCTURE
FACILITIES & AMBIENCE OF THE INSTITUTION - 2019-2020**

M.Sc. MICROBIOLOGY

(NUMBER OF RESPONDENTS - 2)



	Q1	Q2	Q3	Q4	Q5	Q6	Q7	Q8	Q9	Q10	Q11	Q12	Q13	Q14	Q15	Q16	Q17	Q18	Q19	Q20
Strongly Agree (5)	2	1	1	1	2	2	2	1	0	1	2	2	0	1	1	1	1	2	2	2
Agree (4)	0	1	0	1	0	0	0	1	2	0	0	0	2	1	0	1	0	0	0	0
Neutral (3)	0	0	1	0	0	0	0	0	0	1	0	0	0	0	1	0	1	0	0	0
Disagree (2)	0	0	0	0	0	0	0	0	0	0	0	0	0	0	0	0	0	0	0	0
Strongly Disagree (1)	0	0	0	0	0	0	0	0	0	0	0	0	0	0	0	0	0	0	0	0



B. K. Srinivasan
PRINCIPAL
PRINCE SHRI VENKATESHWARA
ARTS AND SCIENCE COLLEGE
CHENNAI-600 073.



PRINCE SHRI VENKATESWARA ARTS AND SCIENCE COLLEGE

Gowrivakkam, Chennai-600073.

Affiliated to University of Madras, ISO 9001:2015 Certified Institution

9	Rate the composition of the courses in terms of Language papers, Core Papers, Allied Papers, Elective Papers, Soft Skills, Non-major Electives, Value Education, Project etc. (Related to Curriculum)	0	2	0	0	0
10	Rate the availability of text books, reference books, Digital Resources and Reading Material Support facilities in library and research environment (Related to infrastructure facilities & ambience of the institution)	1	0	1	0	0
11	Rate the infrastructure available in the college/ department and its usage efficiently (Related to infrastructure facilities & ambience of the institution)	2	0	0	0	0
12	Rate the classroom, lab, IT and other facilities (Related to infrastructure facilities & ambience of the institution)	1	1	0	0	0
13	Rate the maintenance of classrooms, laboratory, sports facilities, faculty cabin, toilets, rest rooms etc. (Related to infrastructure facilities & ambience of the institution)	0	2	0	0	0
14	Rate the encouragement by the institution for performing research, startup and entrepreneurial activities by the faculty (Related to ambience of the institution)	1	1	0	0	0
15	Rate the opportunity extended and financial aid to participate in Faculty development, Conferences, Workshops and etc., (Related to ambience of the institution)	1	0	1	0	0
16	Rate the working environment such as the relationship with co-workers and superiors, organizational culture etc. (Related to ambience of the institution)	0	2	0	0	0
17	Rate the faculty welfare measures taken by the institution (Related to ambience of the institution)	1	0	1	0	0
18	Rate the recognition/ appraisal system / Incentive/ Appreciation of the individual work by the institution (Related to ambience of the institution).	2	0	0	0	0
19	Rate the encouragement for taking-up consultancy works (Related to ambience of the institution)	2	0	0	0	0
	Rate the uniform work distribution and work load for all the faculty in the department (Related to ambience of the institution)	2	0	0	0	0



B. Kalpane
PRINCIPAL

PRINCE SHRI VENKATESWARA
ARTS AND SCIENCE COLLEGE

GOWRIVAKKAM, CHENNAI-600 073



PRINCE SHRI VENKATESWARA ARTS AND SCIENCE COLLEGE

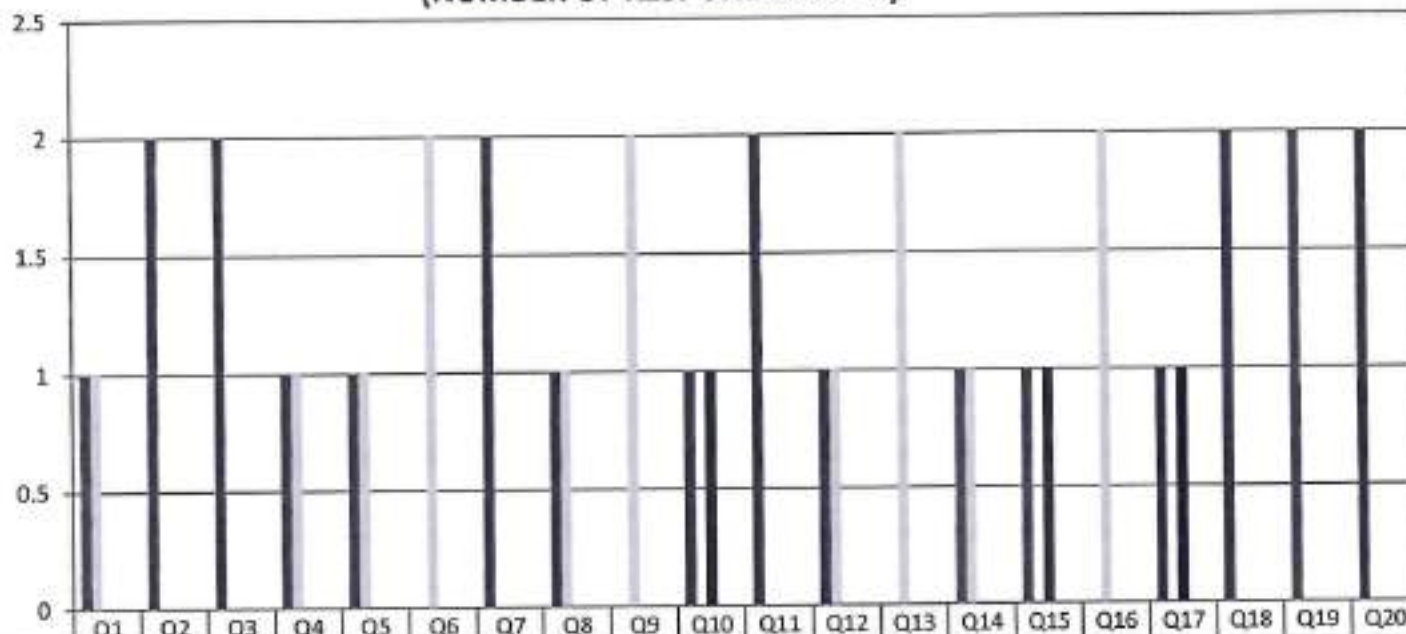
Gowrivakkam, Chennai-600073.

Affiliated to University of Madras, ISO 9001:2015 Certified Institution

**FACULTY FEEDBACK ON CURRICULUM, INFRASTRUCTURE
FACILITIES & AMBIENCE OF THE INSTITUTION - 2019-2020**

M.Sc. COMPUTER SCIENCE

(NUMBER OF RESPONDENTS - 2)



	Q1	Q2	Q3	Q4	Q5	Q6	Q7	Q8	Q9	Q10	Q11	Q12	Q13	Q14	Q15	Q16	Q17	Q18	Q19	Q20
Strongly Agree (5)	1	2	2	1	1	0	2	1	0	1	2	1	0	1	1	0	1	2	2	2
Agree (4)	1	0	0	1	1	2	0	1	2	0	0	1	2	1	0	2	0	0	0	0
Neutral (3)	0	0	0	0	0	0	0	0	0	1	0	0	0	0	1	0	1	0	0	0
Disagree (2)	0	0	0	0	0	0	0	0	0	0	0	0	0	0	0	0	0	0	0	0
Strongly Disagree (1)	0	0	0	0	0	0	0	0	0	0	0	0	0	0	0	0	0	0	0	0



B. Kalpana
PRINCIPAL
PRINCE SHRI VENKATESHWARA
ARTS AND SCIENCE COLLEGE
CHENNAI - 600 073



PRINCE SHRI VENKATESWARA ARTS AND SCIENCE COLLEGE

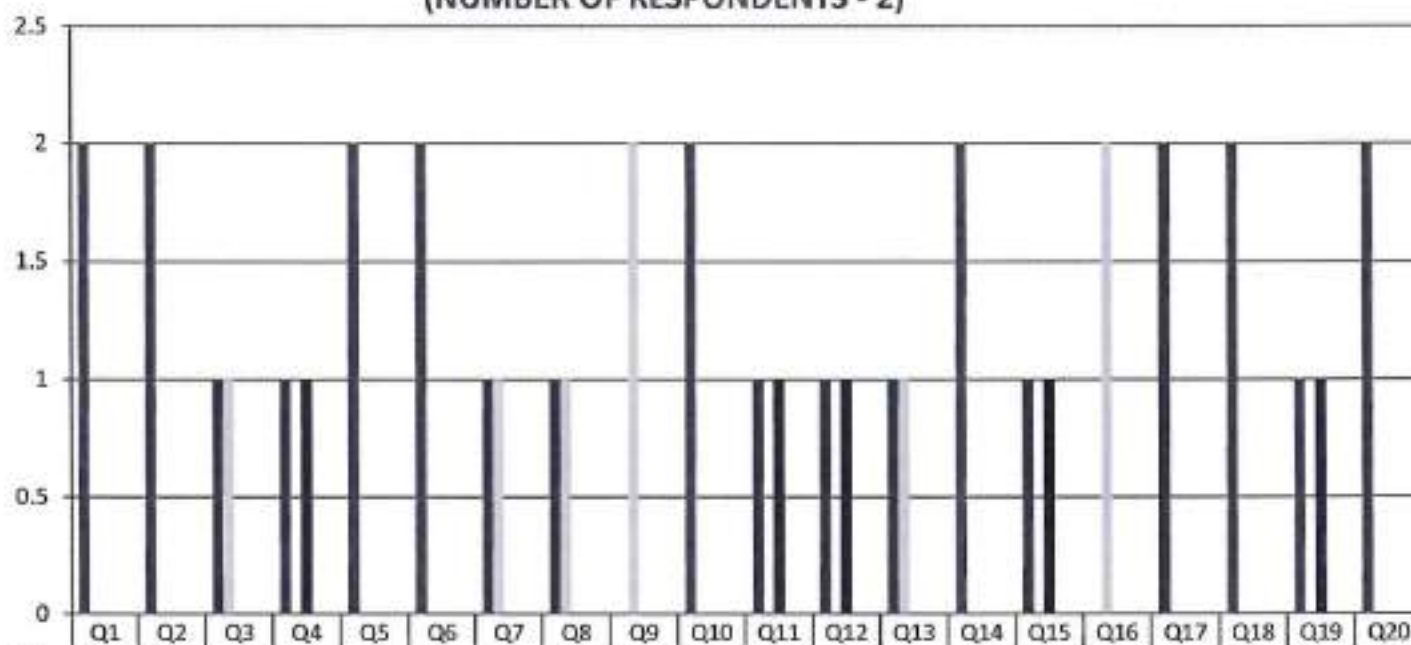
Gowrivakkam, Chennai-600073.

Affiliated to University of Madras, ISO 9001:2015 Certified Institution

FACULTY FEEDBACK ON CURRICULUM, INFRASTRUCTURE FACILITIES & AMBIENCE OF THE INSTITUTION - 2019-2020

M.Sc. BIOTECHNOLOGY

(NUMBER OF RESPONDENTS - 2)



P. Kalpana
PRINCIPAL
 PRINCE SHRI VENKATESHWARA
 ARTS AND SCIENCE COLLEGE
 GOWRIVAKKAM, CHENNAI-600 073



PRINCE SHRI VENKATESWARA ARTS AND SCIENCE COLLEGE

Gowrivaldkam, Chennai-600073.

Affiliated to University of Madras, ISO 9001:2015 Certified Institution

FACULTY FEEDBACK ON CURRICULUM, INFRASTRUCTURE FACILITIES & AMBIENCE OF THE INSTITUTION – ANALYSIS REPORT

Academic Year 2019-20

Department M.Com

Number of Respondents 4

Feedback Rate: Strongly Agree (5), Agree (4), Neutral (3), Disagree (2), Strongly Disagree (1)

S. No	Feedback on Curriculum, infrastructure facilities & ambience of the institution	5	4	3	2	1
1	Rate the sequence of the courses provided in the curriculum (Related to Curriculum)	2	1	1	0	0
2	Rate the syllabus of the courses in relation to the competencies expected out of the course (Related to Curriculum)	2	2	0	0	0
3	Rate the Curriculum facilitation for adoption of new techniques/education tools / strategies in teaching. (Related to Curriculum)	3	1	0	0	0
4	Rate the coverage of Programme / course outcome with the curriculum (Related to Curriculum)	2	1	1	0	0
5	Rate the allocation of the credits and contact hours (L-T-P) to the courses (Related to Curriculum)	3	1	0	0	0
6	Rate the offering of the electives in terms of their relevance to the specialization streams and technological advancements (Related to Curriculum)	3	0	1	0	0
7	Rate the courses in terms of extra learning or self-learning considering the design of the courses. (Related to Curriculum)	3	0	1	0	0
8	Rate the professional development, faculty development and administrative training programs conducted by the institution (Related to Curriculum)	3	1	0	0	0



PRINCE SHRI VENKATESWARA ARTS AND SCIENCE COLLEGE

Gowrivakkam, Chennai-600073.

Affiliated to University of Madras, ISO 9001:2015 Certified Institution

9	Rate the composition of the courses in terms of Language papers, Core Papers, Allied Papers, Elective Papers, Soft Skills, Non-major Electives, Value Education, Project etc. (Related to Curriculum)	1	2	1	0	0
10	Rate the availability of text books, reference books, Digital Resources and Reading Material Support facilities in library and research environment (Related to infrastructure facilities & ambience of the institution)	3	1	0	0	0
11	Rate the infrastructure available in the college/ department and its usage efficiently (Related to infrastructure facilities & ambience of the institution)	3	0	1	0	0
12	Rate the classroom, lab, IT and other facilities (Related to infrastructure facilities & ambience of the institution)	3	0	1	0	0
13	Rate the maintenance of classrooms, laboratory, sports facilities, faculty cabin, toilets, rest rooms etc. (Related to infrastructure facilities & ambience of the institution)	1	3	0	0	0
14	Rate the encouragement by the institution for performing research, startup and entrepreneurial activities by the faculty (Related to ambience of the institution)	2	1	1	0	0
15	Rate the opportunity extended and financial aid to participate in Faculty development, Conferences, Workshops and etc., (Related to ambience of the institution)	3	0	1	0	0
16	Rate the working environment such as the relationship with co-workers and superiors, organizational culture etc. (Related to ambience of the institution)	2	1	1	0	0
17	Rate the faculty welfare measures taken by the institution (Related to ambience of the institution)	3	1	0	0	0
18	Rate the recognition/ appraisal system / Incentive/ Appreciation of the individual work by the institution (Related to ambience of the institution)	3	0	1	0	0
19	Rate the encouragement for taking-up consultancy works (Related to ambience of the institution)	2	2	0	0	0
	Rate the uniform work distribution and work load for all the faculty in the department (Related to ambience of the institution)	2	1	1	0	0



B. Kalpana
PRINCIPAL
PRINCE SHRI VENKATESHWARA
ARTS AND SCIENCE COLLEGE
GOWRIVAKKAM, CHENNAI-600 073



PRINCE SHRI VENKATESWARA ARTS AND SCIENCE COLLEGE

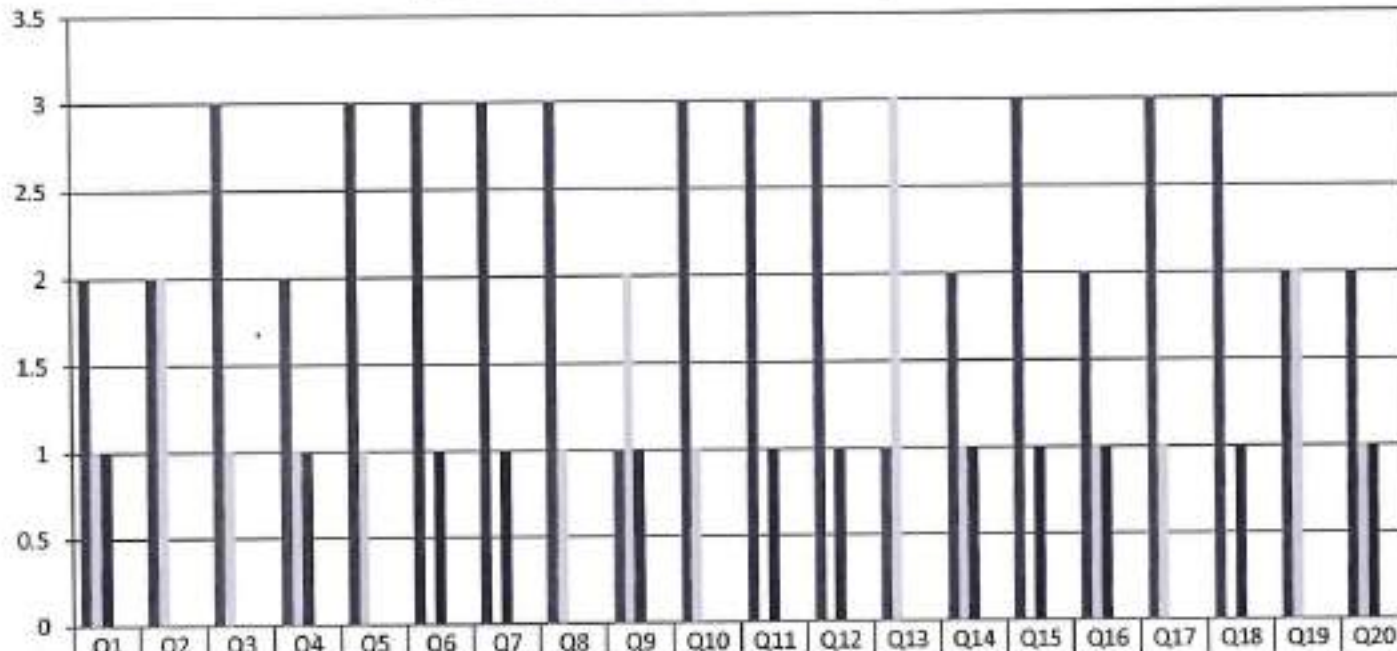
Gowrivakkam, Chennai-600073.

Affiliated to University of Madras, ISO 9001:2015 Certified Institution

FACULTY FEEDBACK ON CURRICULUM, INFRASTRUCTURE FACILITIES & AMBIENCE OF THE INSTITUTION - 2019-2020

M.COM

(NUMBER OF RESPONDENTS - 4)



	Q1	Q2	Q3	Q4	Q5	Q6	Q7	Q8	Q9	Q10	Q11	Q12	Q13	Q14	Q15	Q16	Q17	Q18	Q19	Q20
Strongly Agree (5)	2	2	3	2	3	3	3	3	1	3	3	3	1	2	3	2	3	3	2	2
Agree	1	2	1	1	1	0	0	1	2	1	0	0	3	1	0	1	1	0	2	1
Neutral (3)	1	0	0	1	0	1	1	0	1	0	1	1	0	1	1	1	0	1	0	1
Disagree (2)	0	0	0	0	0	0	0	0	0	0	0	0	0	0	0	0	0	0	0	0
Strongly Disagree (1)	0	0	0	0	0	0	0	0	0	0	0	0	0	0	0	0	0	0	0	0



B. Kalpana
PRINCIPAL
 PRINCE SHRI VENKATESHWARA
 ARTS AND SCIENCE COLLEGE
 GOWRIVAKKAM, CHENNAI-600 073.